

**PLATINUM  
TOOLING**

PLATINUMTOOLING.COM • (847) 749-0633



Platinum Tooling is the exclusive North American importer of standard and custom Live Tools, Angle Heads, and Multiple Spindle Tools manufactured by heimatec GmbH. Our experienced staff is dedicated to providing customers the highest quality and most innovative tooling technology possible. Platinum Tooling serves the automotive, aerospace, medical, firearms, and energy markets, as well as many other industries in metalworking. We have an extensive network of sales representatives throughout the United States, Canada, and Mexico to service OEMs, Machine Tool Dealers, and Industrial Supply Companies. In addition to the Heimatec brand, Platinum Tooling is the exclusive North American importer of Tecnicrafts Swiss Collets and Guide Bushings as well as Henninger Speeders and AMF Cleaning and Marking Tools.



Heimatec is an international manufacturing company headquartered in Renchen, Germany. Its 67,000 square foot facility, on 7.5 acres, is home to over 100 employees including office and manufacturing staff. Heimatec sets the standard for the highest precision and most advanced technology possible in the machine tool accessory market. They are always striving for

excellence and are committed to a philosophy based on constant innovation and attention to detail. Their unparalleled design capabilities allow Heimatec users to enjoy the benefits of the most productive Live Tools, Angle Heads, and Multiple Spindle Tools available. Extensive customer service and expert technical support are always available to assist with your most challenging applications.







Henninger is a manufacturer of specialized equipment and precision machine tool accessories located in Southern Germany. In business for over 60 years, Henninger occupies a 28,000 square foot facility that is home to 30+ employees. Mechanical, air,

and motor driven Speeders plus Custom Angle Heads and Live Centers are amongst their specialties. All of their products are designed with thoughtful engineering and the highest quality materials for tool longevity and performance.

## tecnicrafts®

Tecnicrafts Industries, founded in 2002, is a privately owned and operated company, with 150+ employees that currently occupy a 20,000 square foot state-of-the-art plant situated in the bustling industrial city of Coimbatore in Southern India. Tecnicrafts employs highly skilled machinists to manufacture precision Collets and Guide Bushings for Swiss Type Automatics and

CNC Lathes that are sold all around the world. Tecnicrafts credits their innovative and quality products not only to their dedicated engineering staff but to the valuable feedback provided from their customers. Tecnicrafts is always striving to keep ahead of the industry with products to troubleshoot any unexpected challenges.



AMF is a leading European manufacturer located in Fellbach, Germany, specializing in clamping, automation, and locking technology. Their innovative products are targeted to reduce set-up times and

increase productivity resulting in cost savings. Founded in 1890, the company's goals have remained the same...provide the highest quality products and services available in the marketplace.

### TABLE OF CONTENTS

2-11 **heimatec®**

12-15  **Henninger**  
— we create precision —

16-20 **tecnicrafts®**

21 

Heimatec sets the standard for the highest precision and most advanced technology in the machine tool accessory market.



Standard OD/Axial (Straight) Tool

As the exclusive importer of Heimatec Live Tools in North America, Platinum Tooling inventories a wide variety of tooling in Prospect Heights, Illinois. Additional products are available to ship from factory stock in Renchen, Germany.

**heimatec**®

Heimatec specializes in the development and production of precision Live Tools. Engineered to provide outstanding performance and durability, Heimatec's superior design allows for maximum stability and accuracy. The tools are manufactured with close attention to detail and include superior bearing and gear technology for smooth transmission and high torque output. In addition, their patented u-tec<sup>®</sup> changing system offers flexibility, shorter setup times, and considerable cost savings.



OD/Axial Offset  
Style Tool



Universal Adjustable  
Angle Tool



1:4 Gear Ratio Tool  
(24,000 rpm)



4 Spindle Custom  
CAT 40 Tool



OD/Axial  
Twin Spindle Tool



Multiple Spindle Tool  
2x ER 11



Heimatec offers the widest range of Live Tools in the industry.



Heimatec has a database containing over 40,000 designs suitable for all applications.

Whether your application is simple or complex, Heimatec tools are designed for maximum productivity and performance. In addition to standard axial and radial tools, they also offer speed increasers with up to 1:4 gear ratios, high torque, universal adjustable, multiple spindle, and gear hobbing tools. Most styles can be supplied with high pressure internal coolant capabilities.



Heimatec supplies precision Live and Static Tools in all sizes...from the smallest Swiss Type CNC Lathes all the way to the largest Live Tool Lathes. Their offering includes tools for the following machine tool builders:

CITIZEN  
DMG MORI  
DOOSAN  
EMAG  
EMCO  
EUROTECH/BIGLIA  
FEELER  
GANESH  
HAAS  
HARDINGE  
HURCO  
HWACHEON

HYUNDAI WIA  
MAZAK  
MIYANO  
MURATA/MURATEC  
NAKAMURA  
OKUMA  
SMEC/SAMSUNG  
SPINNER  
TAKISAWA  
TSUGAMI  
VICTOR/FORTUNE  
YAMA SEIKI/GOODWAY





## Multiple Spindle & Custom Tools Solutions for the Toughest Applications

Heimatec offers custom and Multiple Spindle Tools for your most challenging production needs. These tools are specifically designed to maximize the capabilities of the machine tool. If not already in production, Heimatec can design and build custom tools to suit your specific requirements. These tools will be manufactured with the same superior quality and detail as their standard tools.



Standard Face/Radial  
Twin Spindle Tool



Custom Multiple Spindle Tool



Dual Output Fixed  
Angle Tool

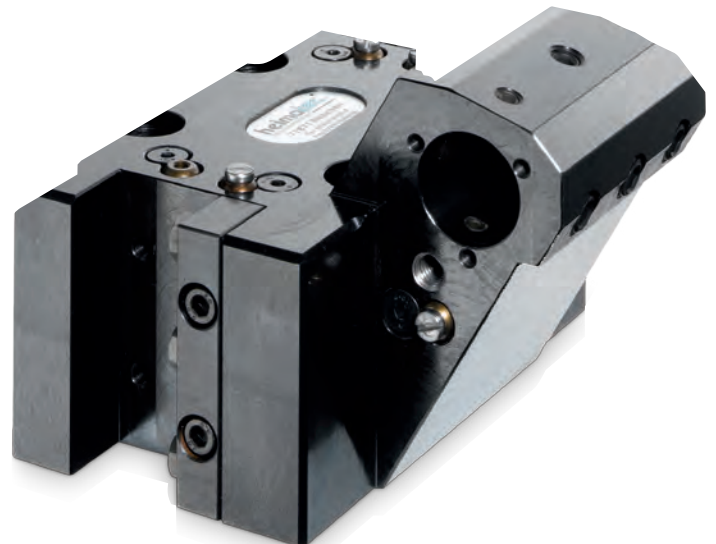


## Static Tools

# Built to complement the precision of the machine tool

Heimatec manufactures these Static Tools specifically for each machine model to ensure the machine's capabilities are being fully utilized. Their offering includes:

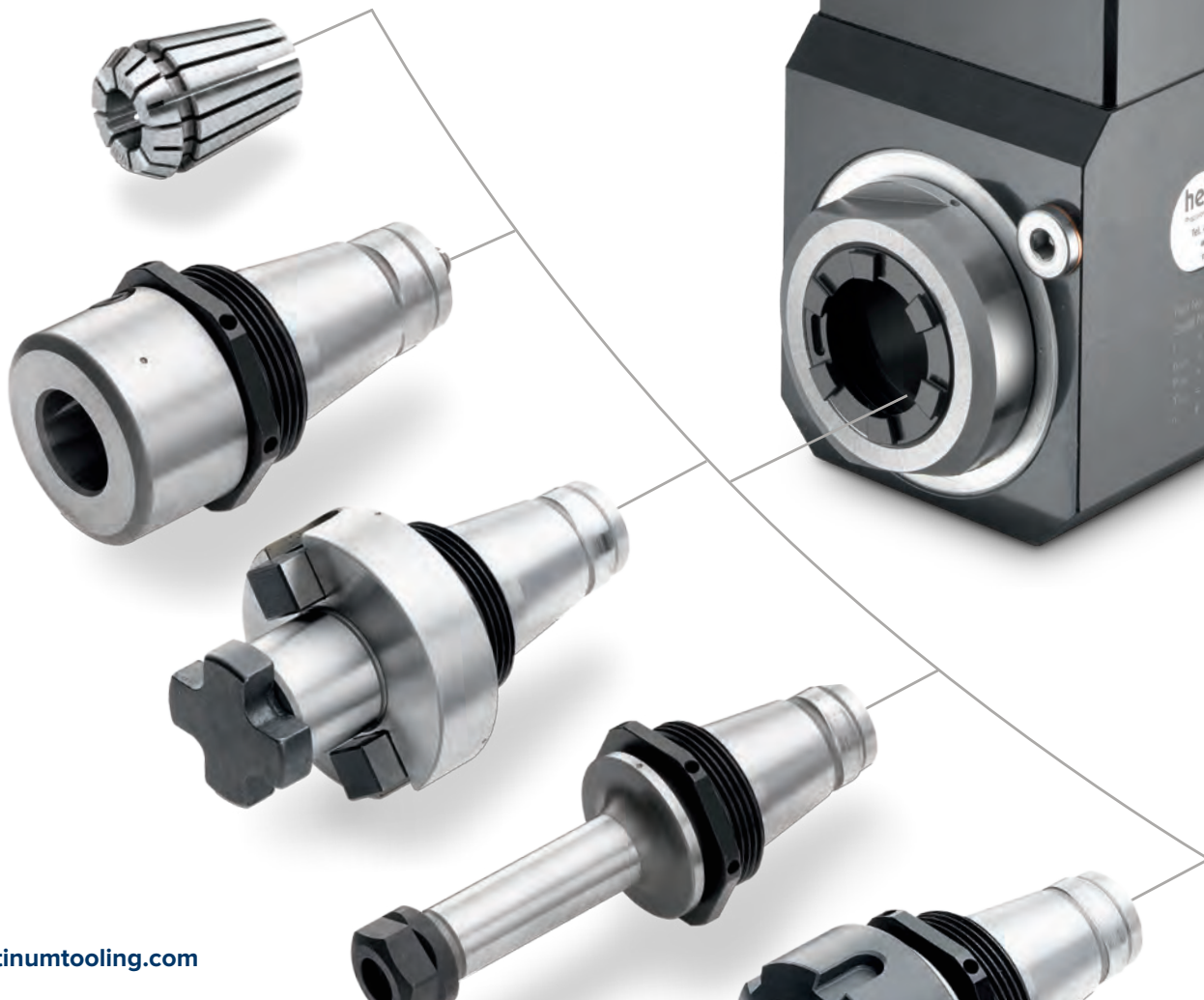
- Boring Bar Holders featuring coolant through capabilities
- Half Index and Y-axis tools for boring and turning for main/sub spindle applications
- Universal Turning and Facing Tools for use on main and sub spindle
- Cut-off Holders with internal coolant and height adjustment
- u-tec<sup>®</sup>, HT, and Capto output tools



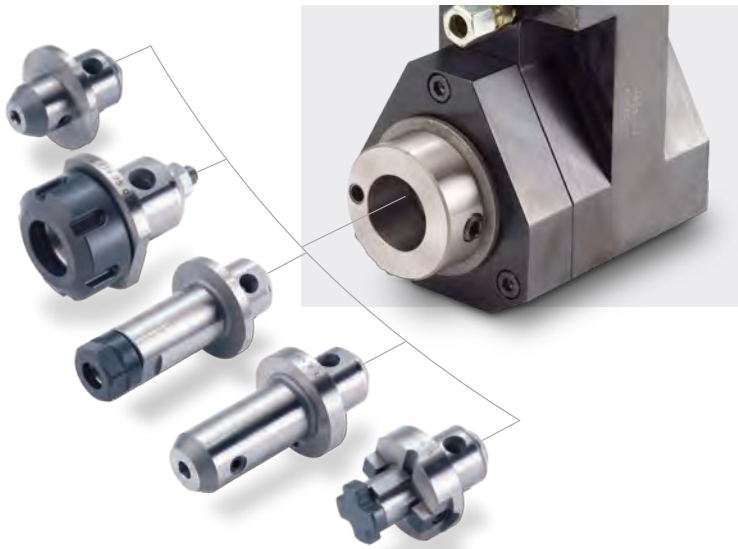
## u-tec® flexible changing system

# Versatility & Cost Savings

Heimatec tools are engineered with their patented u-tec® changing system adding flexibility to standard ER output Live Tools and Angle Heads, allowing them to accept various adapters for different applications. Heimatec tools are built with an internal polygon drive to ensure the adapter has a solid connection for maximum performance and accuracy. Their compact design helps keep the overall tool length down to a minimum. The best part, Heimatec's u-tec® changing system helps reduce inventory and changeover time resulting in cost savings.

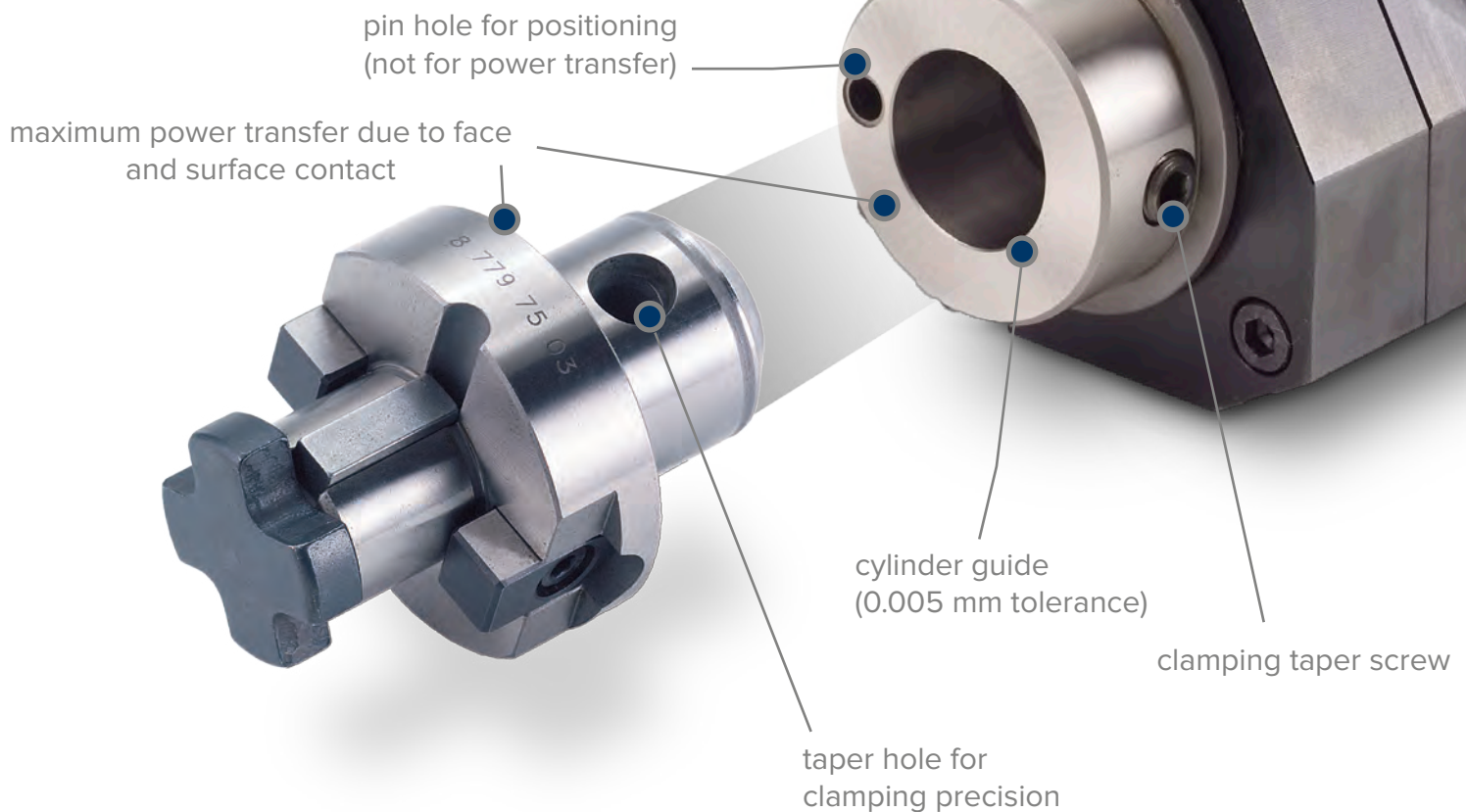






## HT Quick Change System Quick Change Advantage

Heimatec's HT Quick Change System enables the operator to replace the adapter with one hand. The adapters are easy to pre-set outside of the machine to minimize downtime. The HT Quick Change System is available for Live and Static Tools as well as machining center Angle Heads and offers exceptional repeatability and accuracy.



## Angle Heads

# Superior Performance & Durability

Heimatec's standard and custom Angle Heads are designed and manufactured to handle the most difficult applications. They are ideal for drilling, tapping, and milling operations enhancing the machine's current capabilities. Workpiece accuracy and productivity are maximized by performing vertical, horizontal, or compound angular operations without repositioning.

Heimatec offers a variety of styles to suit your application needs. Angle Heads with compact, extended reach capabilities, slim line styles for working in small places, dual output tools for added productivity, and universal adjustable tools are all standard designs.



Single Output - Standard Duty





Single Output - Slim Line

## Heimatec Angle Heads

- Powerful, accurate, and rigid
- Applications include milling, drilling, and tapping
- Torque rating up to 150 Nm
- Up to 1:4 gear ratio available
- Spindle speeds up to 24,000 rpm
- 360° body rotation
- Interchangeable torque arms
- Compatible with most Automatic Tool Changers



Single Output - Offset  
(external nut)



Single Output - Offset  
Slim Body



Universal +/- 90°  
adjustable Standard Duty

Henninger Speeders offer a lower cost option for increased rpm when the purchase of a new machine just isn't in the budget.



Henninger Spindle Speeders help to extend the life of the machine tool by minimizing the stress on the spindle. This added speed allows the cutting tool to run at its recommended rpm resulting in optimal performance.



## Henninger Mechanical Speeders

Henninger offers Mechanical Spindle Speed Increasers with gear ratios up to 1:8 and a maximum speed of 50,000 rpm. These tools are designed to help maximize productivity and allow for less wear and tear on the machine spindle, as it does not have to run at its maximum rpm. Ideal for drilling, milling, engraving, and grinding applications. Tight tolerances can be held with a maximum runout of .01 mm (10 microns).

Henninger Spindle Speed Increasers are modular in design with a variety of tool connections (shanks) and output sizes up to CAT 50 with 65 hp. Many speeders have automatic tool change capabilities to minimize machine downtime.

Internal coolant and high torque tools are also available.



Type 834

# Henninger Air Speeders

Henninger Air Speeders are engineered for continuous drilling, milling, engraving, and grinding with operation up to 80,000 rpm. With constant air supply to prevent heat buildup, these tools are ideal for longer duty cycles and ensure optimum operation of small cutting tools. Air can be supplied either laterally or through the pull stud.

Henninger Air Speeders are modular in design offering interchangeable components for cost savings and versatility. Available in all common machine connections (shanks) and an ER 11 output, these tools are ideal for holding small tool shanks up to Ø 7mm (.275"). Longer tool life will be achieved due to a maximum runout of .005mm (5 microns).

Henninger Air Speeders are lightweight and can be used in the automatic tool changer depending upon the air supply method. These tools are permanently greased to provide maintenance free operation.



Type 852





Type 940/058

## Henninger Motor Speeders

Henninger offers a variety of Motor Speeders with designs up to 80,000 rpm and 20 hp. These high-speed tools are water cooled and can perform many operations such as drilling, milling, grinding, and engraving. In addition, Motor Speeders can function independent of the machine spindle to create a test bench.

Custom Motor Speeders can be built to suit a variety of requirements. Available with all common machine connections (shanks) and outputs up to and including HSK-40E. Optimal performance of your cutting tool can be achieved due to a maximum runout of .005mm (5 microns).

## CUSTOM ANGLE HEADS

With more than 600 Custom Angle Heads already engineered and produced, Henninger can solve your toughest application challenges. A variety of special features are available including arbor output, HT quick change, internal coolant, oil mist lubrication, and air sealing. In addition, tools with “Hirth” coupling for 4x/8x 90° indexing, machine specific flange, or 3-point support systems are available. Dual output for increased productivity and automatic C-axis adjustment features are also possible.





## Collets & Guide Bushings for Swiss Type CNC Lathes

# tecnicrafts®

Tecnicrafts offers a wide range of Collets and Guide Bushings suitable for most Swiss style machines. All Collets and Guide Bushings are available in standard and ultra-precision grades with a runout accuracy of 5 microns or less. Bore profiles include round, square, hexagon, rectangle, and custom.

Each part undergoes a specialized heat treatment process to ensure more consistent performance.

Tecnicrafts quality control includes 100% inspection prior to shipment. In addition, all Collets and Guide Bushings are chamfered in the back bore and slits to provide smooth guiding and unwanted marks.



## Machine Tools & Industries supported by Tecnicrafts

### Tecnicrafts offers Collets & Guide Bushings for the following Swiss machines:

Bechet	Goodway	Maier	Polygim
Bechler	Hanwha	Manurhin K'MX	Star
Citizen Cincom	Hardinge	Miyano	Strohm
Doosan	Index	Nexturn	Tornos
Gauthier	Jinn-Fa	Nomura	Traub
Gildemeister	KSI	Petermann	Tsugami

### Tecnicrafts offers Collets for the following CNC cutter grinders:

Anca      Ewag      Rollomatic

### Tecnicrafts manufactures Workholding tools for the following industries:

Automotive  
Micromechanics (Watches)  
Electronics  
Connectors  
Medical  
Dental  
Defense  
Aerospace



# Tecnicrafts Collets



- Smooth bores for use on ground stock and small diameters
- Grooved bores designed for stronger gripping force
- Serrated bores to achieve maximum gripping force
- Long Nose Collets offered in both straight and tapered style
- Over-grip/Step collets/Special profile bores manufactured per customer's specifications
- V-line slots ideal for holding profiles other than round and additionally to help keep contamination out and prevent unwanted marks
- Brass guides to support small diameter material
- Keyways on the cone or guiding diameter for alignment purposes



Long Nose Tapered



V-line



Hex

## Tecnicrafts Guide Bushings



Tecnicrafts uses specialized carbide for maximum wear resistance and to avoid chipping. A special brazing process is used to ensure long term reliability. Special care is taken to realize the smoothest bore finish in the market.

- U-line slots are ideal for holding profiles other than round and additionally to help keep contamination out and prevent unwanted marks
- Extended carbide (max land) available up to 70mm
- Tapered Long Nose Guide Bushings are available
- Standard and custom profile shapes including square and hex
- Reinforced shank optional for enhanced stability
- Brass guides to support small diameter material



Max Land



U-line



Square



## Tecnicrafts Alternative Collets for Workholding

W-type Collets for use in CNC cutter grinders are available in standard and long nose versions with ultra-precision up to 5 microns accuracy.

Tecnicrafts offers 5C, 16C, and 3J Collets in standard and custom sizes. Emergency Collets also available.

Single and double ended Straight Shank ER Collet Chucks are available in metric and inch sizes.

Bar Feed Collets available in external thread, internal thread, and pin styles.



W-type Collet



5C Collet



ER Collet Chuck



Bar Feed Collets

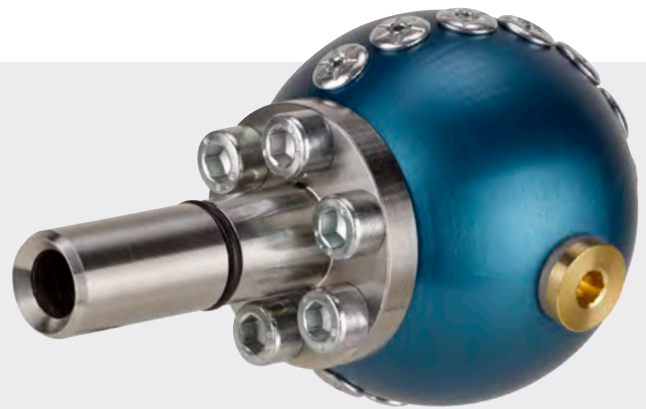
AMF Marking and Cleaning tools can be used in conjunction with each other to automate the marking process. After the completion of the machining process, the cleaner can be used to wash away the chips for the marking process to follow.

These tools are typically placed in Toolholders utilizing ER collets or Weldon clamping systems.

## AMF Cleaning and Marking Tools

AMF Marking Tools are used for the permanent marking of workpieces made from all types of metal and thermoplastic substrates. This high-speed method offers low acquisition costs, enormous time savings, and long service life. A reduction of up to 90% in marking time can be achieved.

AMF markers ensure a high-quality typeface. During the process, the surface of the workpiece is not damaged, but strengthened. The material is compacted and the marking process does not create any burrs. These tools are suitable for marking smooth, rough, and thin walled surfaces. Also, marking is possible on round surfaces and materials with a hardness rating of up to 57 HRC.



AMF Cleaning Tools are used for the thorough cleaning of workpieces, tooling, and interiors of CNC machines. These tools allow for the intermediate cleaning of workpieces during the machining process. The use of through spindle coolant or compressed air eliminates the risk of injury from chips and aerosol pollution.



16 E. Piper Lane, Suite 128  
Prospect Heights, IL 60070

phone: (847) 749-0633

email: [info@platinumtooling.com](mailto:info@platinumtooling.com)

[www.platinumtooling.com](http://www.platinumtooling.com)

[facebook.com/PlatinumTooling](https://www.facebook.com/PlatinumTooling)

[twitter.com/PlatinumTooling](https://twitter.com/PlatinumTooling)